



Resources and Initiatives to Train Healthcare Providers

Type into the chat

How many of you have, or know someone who has ever left something out of a medical history or intentionally misreported information to their healthcare provider?

Why is this the case?

Shifting away from screening...

“No one is hurting you at home, right?” (Partner seated next to client as this is asked — consider how that felt to the patient?)

“Within the last year has your partner ever hurt you or hit you?” (Nurse with back to you at their computer screen)

“I’m really sorry I have to ask you these questions, it’s a requirement of our clinic.” (Screening tool in hand – What was the staff communicating to the patient?)

How is CUES different?

- Disclosure is not the goal!
- Focus on prevention in addition to intervention.
- All patients have access to information on services, not just those who disclose.
- Patients are encouraged to share resources with friends/family.
- Advocates are key members of the health care team through warm referrals.

C: Confidentiality

Discuss limits confidentiality and see patient alone for part of the visit

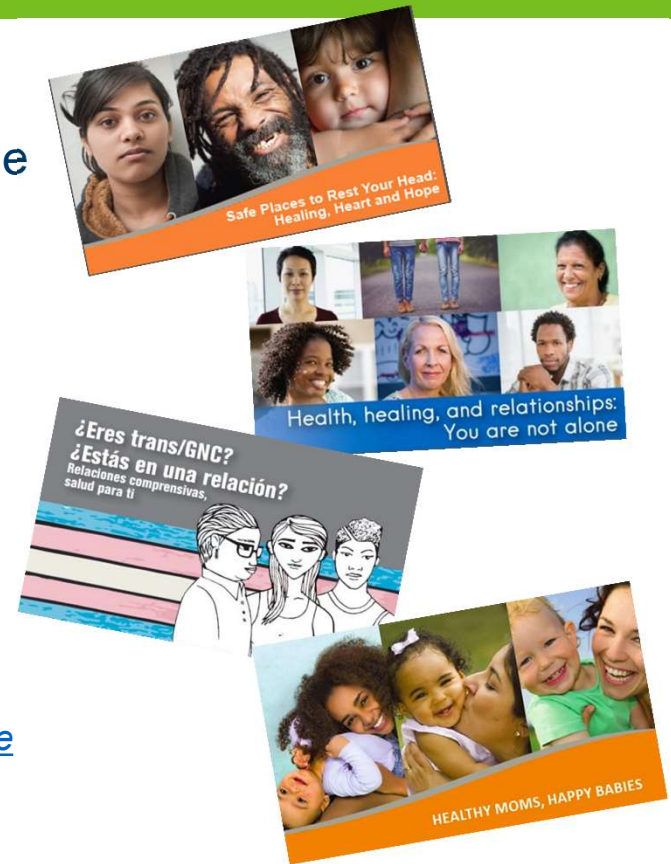
UE: Universal Education and Empowerment

Provide universal education on consensual sex, healthy relationships, harm reduction, and helping a friend

S: Support

Provide warm referrals to local services

Find more information from *Futures Without Violence* and the [National Health Resource Center on Domestic Violence](#)



Office on Women's Health Grants to Reduce Maternal Deaths Due to Violence

1. Establish or expand programs that review, identify, and track maternal deaths due to violence (homicide and suicide)
2. Implement evidence-based interventions to improve outcomes and reduce maternal violent deaths
3. Develop a sustainability plan for maintaining the program when the cooperative agreement award ends

Key Partners

1. Minnesota Department of Health
2. Violence Free Minnesota
3. Minnesota Association of Community Health Centers
4. Minnesota Perinatal Quality Collaborative

Safe Harbor Health Care Worker Training

- 6 short modules
- Human trafficking and exploitation (sex and labor)
- Created for health care workers in a variety of settings:
 - Emergency departments
 - Community-based clinics
 - Schools (nurses, counselors)
 - Mental Health
 - Substance Use



Module Topics

- Overview and Dynamics of Trafficking and Exploitation.
- Indicators of Trafficking and Exploitation
- Assessment of Survivors of Trafficking
- Survivor-Informed Response for Health Care Providers with Coaching Companion
- Services, Resources, and Considerations
- ICD-10-CM Coding

This training will help participants understand the dynamics of human trafficking, recognize the signs of human trafficking, and support survivors in receiving health care. They will also be introduced to human trafficking survivor resources and the importance of coding human trafficking cases.

Advisory Group

- Lindsay Arf, Subject Matter Expert
- Kimberly Berg, APRN, CNP, Midwest Children's Resource Center
- Diane Bohn, RN, CNMW, Indian Health Services – Cass Lake
- Nathalie Crowley, Family Tree Clinic
- Pamela DeWitt-Meza, RN, Create Impact Consulting
- Vickie Ernste, DNP, MSN, RN, Mayo Clinic
- Jordan Greenbaum, MD, Children's Healthcare of Atlanta
- Leah Lutz, Consultant
- Bukola Oriola, The Enitan Story and Subject Matter Expert
- Joe Schindler and Jenny Schoenecker, Minnesota Hospital Association

Accessing the Training

- Visit the MDH E-Learning Center: [MDH Learning Center Registration Instructions - Minnesota Dept. of Health \(state.mn.us\)](https://www.health.state.mn.us/communities/safeharbor/communities/healthcare.html)
- Search for human trafficking training
- The training is free and eligible for CEU credits
- Accessible to anyone – Minnesota specific parts
- To learn more visit:
<https://health.state.mn.us/communities/safeharbor/communities/healthcare.html>

Thank You!

Mary Hopkins

Mary.Hopkins@state.mn.us

651-201-5404

Caroline Palmer

Caroline.Palmer@state.mn.us

651-201-5492